

Light efficiency:



Light quality:



Color temperature:



Output: 1506 lm

Peak: 6576 cd

Power: 89.4 W

PF: 0.99



Tracking number: [n/a](#)

Product name:

ElectraPix Bar 16

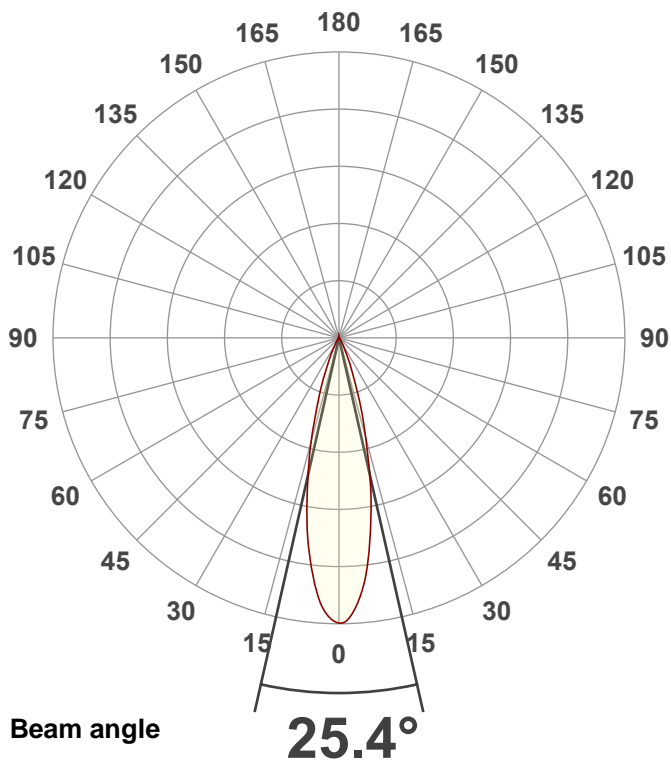
Item number:

Full On No UV

Date and time:

8/28/2024 11:35:24 AM

Description:

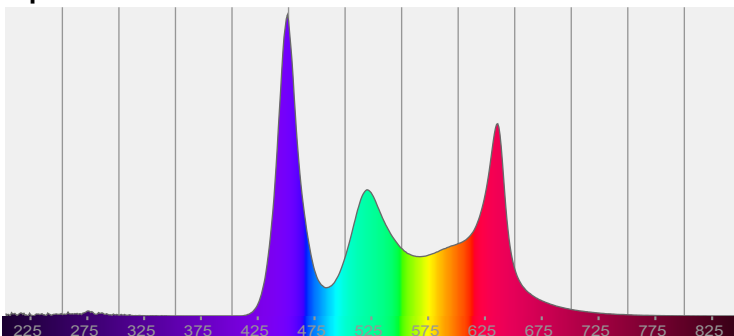


CIE 1931

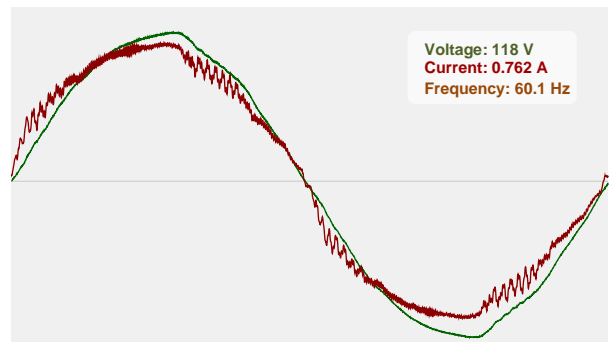
x: 0.308

y: 0.279

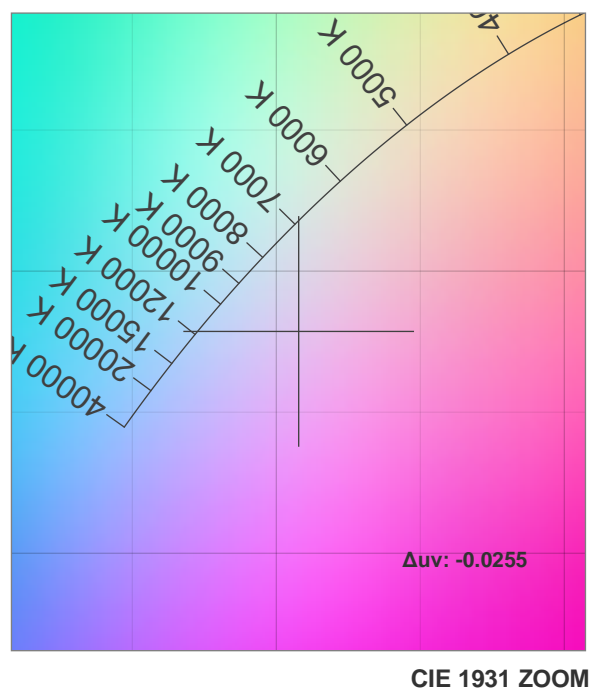
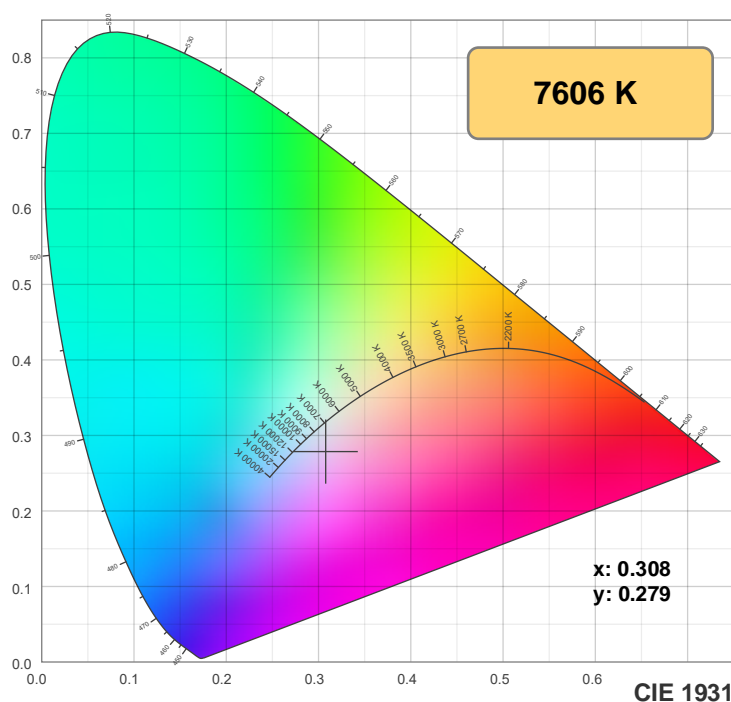
Spectra



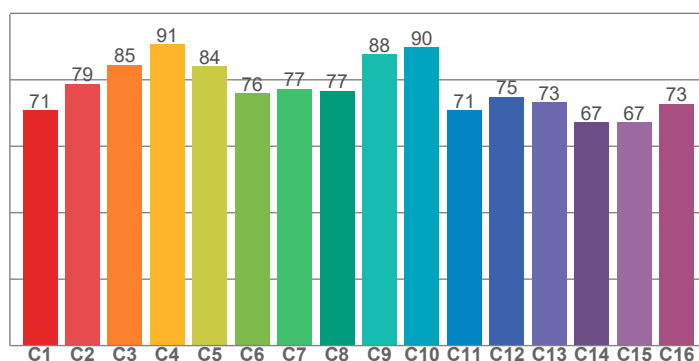
Power



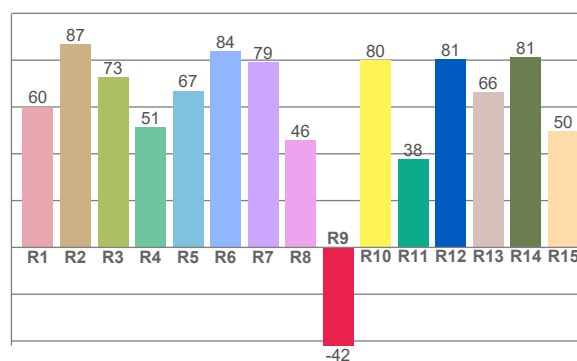
Color details



TM-30: 79.1



CRI: 68.4 (R1-R8)



CRI R values, only R1-R8 are used to calculate final CRI value

R1	R2	R3	R4	R5	R6	R7	R8	R9	R10	R11	R12	R13	R14	R15
60.1	86.9	72.6	51.4	67.0	83.8	79.3	45.8	-42.0	79.9	37.5	80.6	66.4	81.4	49.7

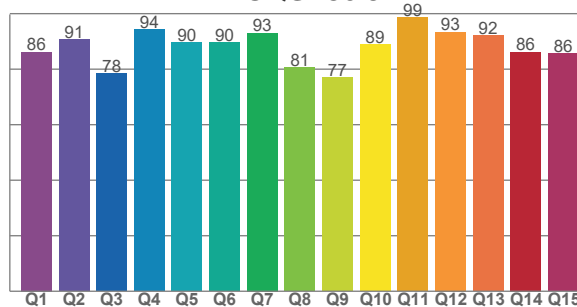
TM30 C values, 16 binned values out of total of 99 C values

C1	C2	C3	C4	C5	C6	C7	C8	C9	C10	C11	C12	C13	C14	C15	C16
70.7	78.8	84.5	90.7	84.0	76.0	77.3	76.7	87.7	89.8	70.8	74.9	73.3	67.2	67.3	72.7

CQS Q values

Q1	Q2	Q3	Q4	Q5	Q6	Q7	Q8	Q9	Q10	Q11	Q12	Q13	Q14	Q15
86.2	90.7	78.5	94.3	89.7	89.6	93.1	80.6	77.0	88.9	98.6	93.4	92.2	86.2	85.7

CQS: 86.9



Color parameters

Color temperature	Color rendering index	Red component	Color fidelity	Color gamut	Color quality scale	Color coordinate cie 1931	Color coordinate cie 1931	Color coordinate	Color coordinate	Color deviation from black body
CCT	CRI	CRI R9	TM30 Rf	TM30 Rg	CQS	x	y	u	v	Δuv
7606 K	68.4	-42.0	79.1	119.7	86.9	0.308	0.279	0.215	0.292	-0.0255

TM-30 details

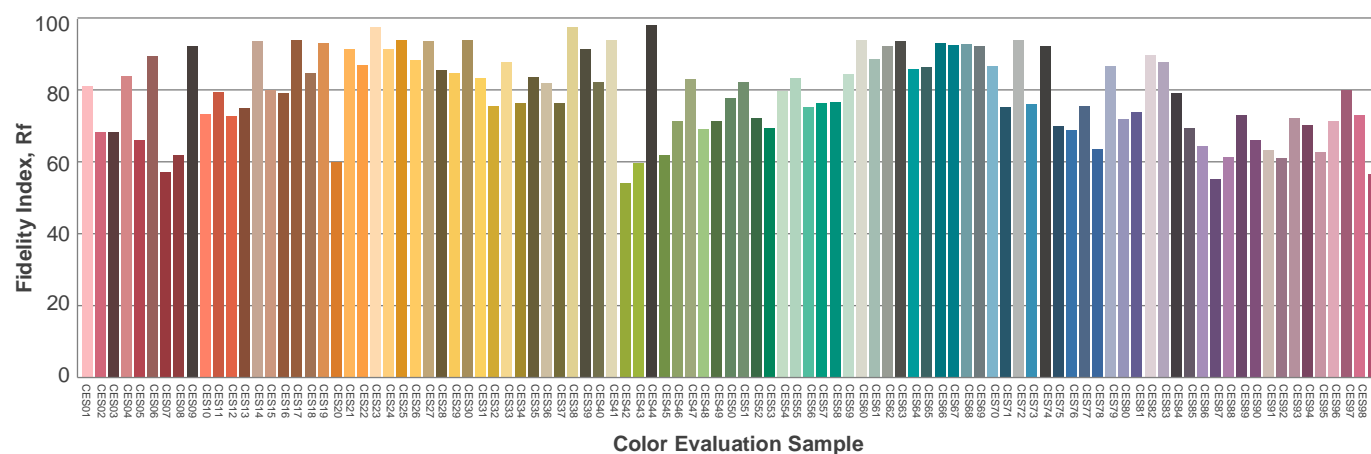
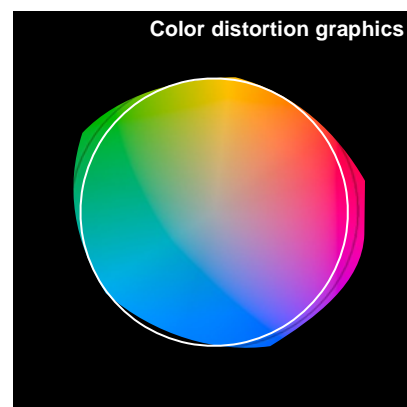
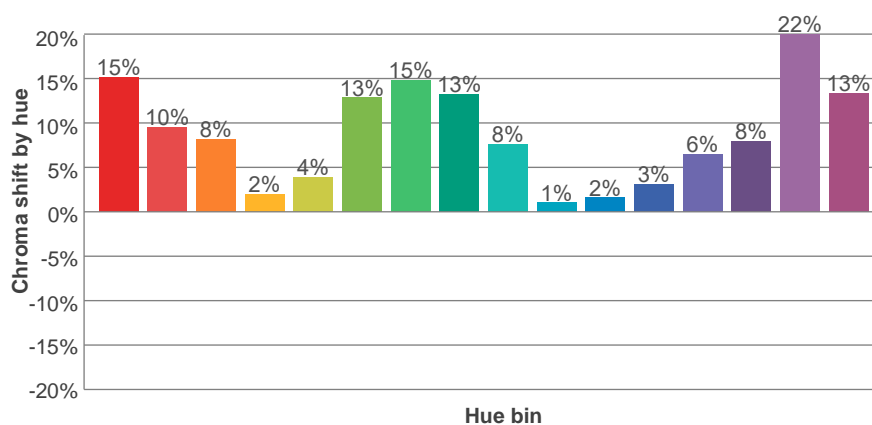
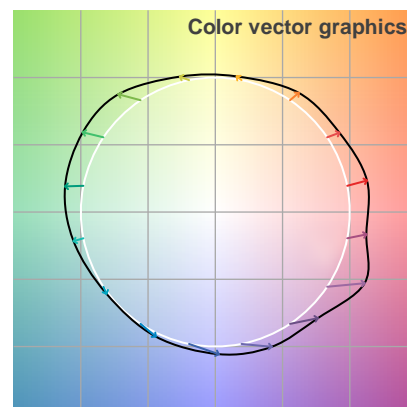
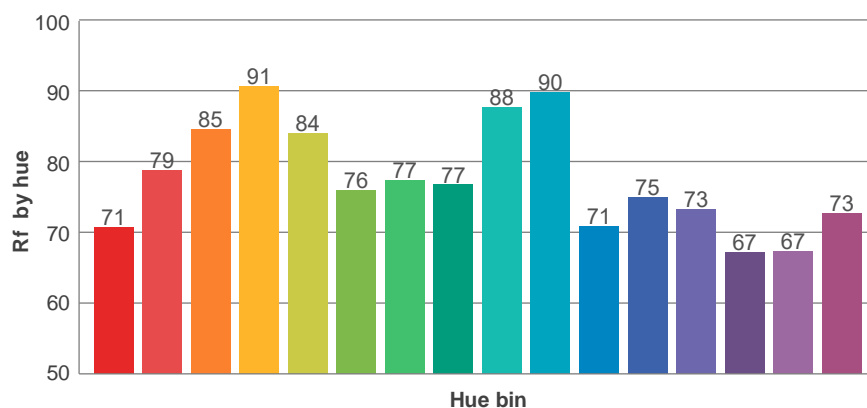
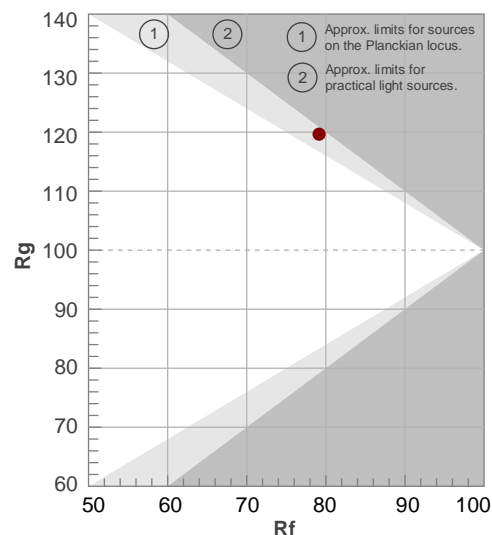
Rf 79.1

Fidelity index Rf

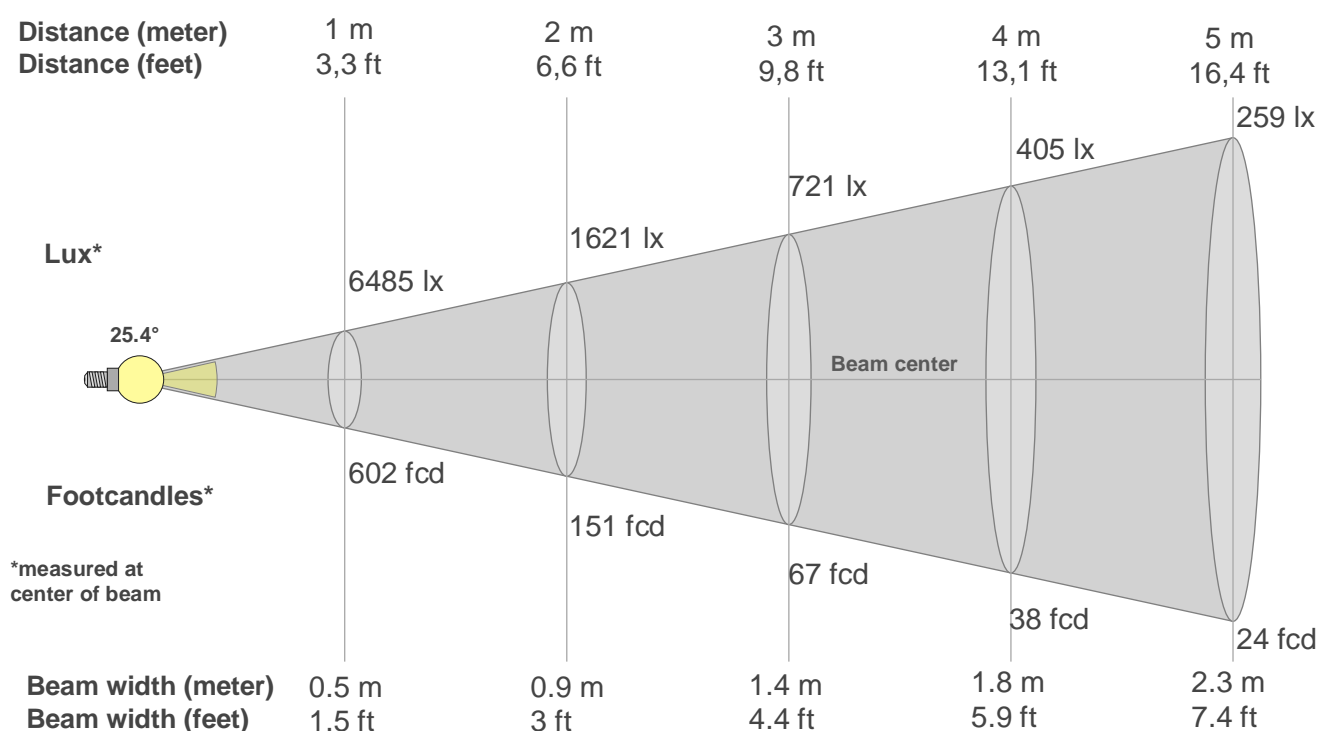
Rg 119.7

Gamut index Rg

Hue Bin	R _f	Shifts (%)	
		Chroma	Hue
1	71	15%	1%
2	79	10%	-2%
3	85	8%	-2%
4	91	2%	4%
5	84	4%	6%
6	76	13%	11%
7	77	15%	5%
8	77	13%	3%
9	88	8%	1%
10	90	1%	6%
11	71	2%	15%
12	75	3%	23%
13	73	6%	22%
14	67	8%	20%
15	67	22%	18%
16	73	13%	6%



Beam details



Beam intensities from 1-20m

1m	2m	3m	4m	5m	6m	7m	8m	9m	10m	11m	12m	13m	14m	15m	16m	17m	18m	19m	20m
3.3ft	6.6ft	9.8ft	13.1ft	16.4ft	19.7ft	23ft	26.2ft	29.5ft	32.8ft	36.1ft	39.4ft	42.7ft	45.9ft	49.2ft	52.5ft	55.8ft	59.1ft	62.3ft	65.6ft
6485lx	1621lx	721lx	405lx	259lx	180lx	132lx	101lx	80lx	65lx	54lx	45lx	38lx	33lx	29lx	25lx	22lx	20lx	18lx	16lx
602.4fcd	150.6fcd	66.9fcd	37.7fcd	24.1fcd	16.7fcd	12.3fcd	9.4fcd	7.4fcd	6fcd	5fcd	4.2fcd	3.6fcd	3.1fcd	2.7fcd	2.4fcd	2.1fcd	1.9fcd	1.7fcd	1.5fcd

Intensities in 0° c-plane

0°	2°	4°	6°	8°	10°	12°	14°	16°	18°	20°	22°	24°	26°	28°	30°	32°	34°	36°	38°
6485	6421	6035	5649	4967	4253	3539	2822	2105	1608	1135	766	549	332	243	169	115	91	67	57
100%	99%	93%	87%	77%	66%	55%	44%	32%	25%	18%	12%	8%	5%	4%	3%	2%	1%	1%	1%

Intensities in 90° c-plane

0°	2°	4°	6°	8°	10°	12°	14°	16°	18°	20°	22°	24°	26°	28°	30°	32°	34°	36°	38°
6485	6421	6035	5649	4967	4253	3539	2822	2105	1608	1135	766	549	332	243	169	115	91	67	57
100%	99%	93%	87%	77%	66%	55%	44%	32%	25%	18%	12%	8%	5%	4%	3%	2%	1%	1%	1%

Intensities in 180° c-plane

0°	2°	4°	6°	8°	10°	12°	14°	16°	18°	20°	22°	24°	26°	28°	30°	32°	34°	36°	38°
6485	6331	6133	5540	4948	4273	3543	2827	2237	1647	1208	868	548	405	261	176	129	86	71	56
100%	98%	95%	85%	76%	66%	55%	44%	34%	25%	19%	13%	8%	6%	4%	3%	2%	1%	1%	1%

Intensities in 270° c-plane

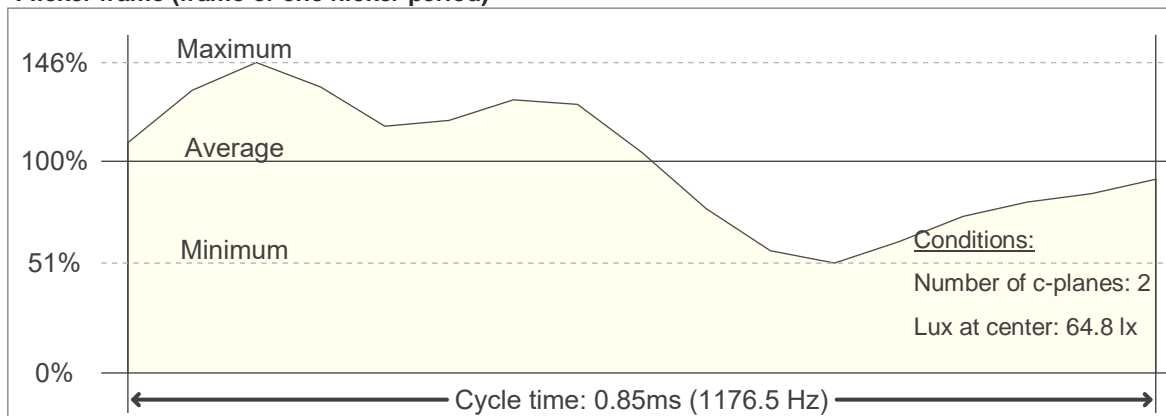
0°	2°	4°	6°	8°	10°	12°	14°	16°	18°	20°	22°	24°	26°	28°	30°	32°	34°	36°	38°
6485	6331	6133	5540	4948	4273	3543	2827	2237	1647	1208	868	548	405	261	176	129	86	71	56
100%	98%	95%	85%	76%	66%	55%	44%	34%	25%	19%	13%	8%	6%	4%	3%	2%	1%	1%	1%

Beam angle 50%	Field angle 10%	Cutoff angle 2,5%	Intensity ratio in 120° cone	Intensity ratio in 90° cone
25.4°	46.2°	60.6°	99.5%	97.7%

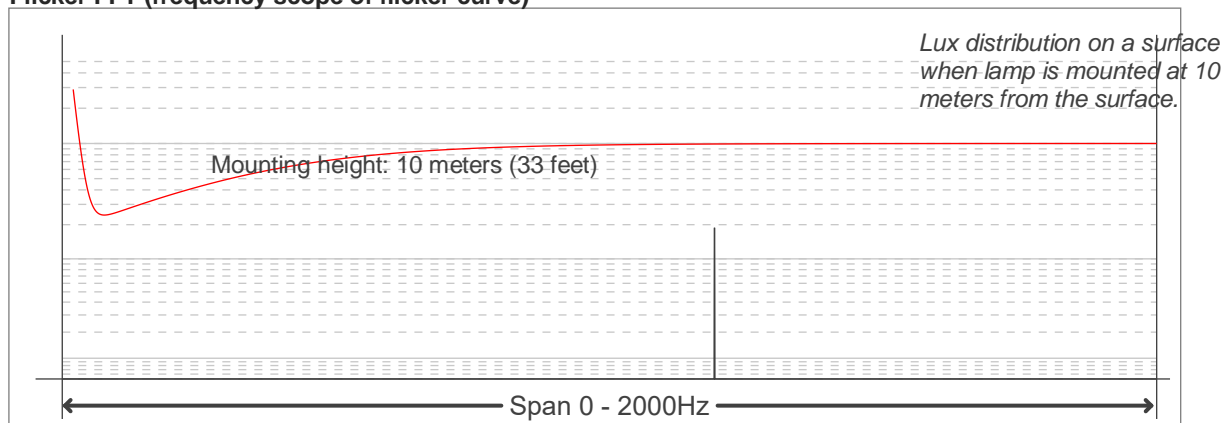
Flicker

Flicker curve (complete sampled flicker signal)

Flicker frame (frame of one flicker period)



Flicker FFT (frequency scope of flicker curve)



Flicker results:

Flicker frequency:		1176.47 Hz	
Flicker index:	0.13	JA8/10 40Hz	0.47 %
Flicker percentage:	48.45 %	JA8/10 90Hz	1.01 %
SVM: (Visual flicker)	0.38	JA8/10 200Hz	2.23 %
PstLM	0.03	JA8/10 400Hz	4.42 %
Mp	0.09	JA8/10 1000Hz	12.52 %

Flicker conditions:

Sample rate:	20000 samples/second
--------------	----------------------